

BIGSHOT

SCREEN MAGNIFIER

User's Guide

Version 2.0



Phone: (802) 362-3612

Fax: (802) 362-1670

Email: sales@aisquared.com
support@aisquared.com

Website: www.aisquared.com

Mail: P.O. Box 669
Manchester Center, VT 05255

Copyrights

BigShot® Screen Magnifier

Copyright © 2002, Algorithmic Implementations, Inc (d.b.a. Ai Squared). All Rights Reserved.

Unauthorized copying, duplicating, selling or otherwise distributing this software or documentation is a violation of Federal Copyright Law. No part of this publication can be reproduced, transmitted, stored in a retrieval system, or translated into any language in any form by any means without the express written consent of Ai Squared.

Credits

BigShot developers

Ben Weiss
Jim Edwards
John Bryant
Shawn Warren
Tim Lalor

User's Guide writers

Scott Moore
Ben Weiss

Trademarks

BigShot is a registered trademark of Algorithmic Implementations, Inc (d.b.a. Ai Squared).

Microsoft and **Windows** are registered trademarks of Microsoft Corporation.

Pentium is a registered trademark of Intel Corporation.

Software License Agreement

IMPORTANT – Read this carefully before opening the disk package.

ALGORITHMIC IMPLEMENTATIONS, INC. (D.B.A. AI SQUARED) IS WILLING TO LICENSE THE ENCLOSED SOFTWARE TO YOU ONLY IF YOU ACCEPT ALL OF THE TERMS IN THIS LICENSE AGREEMENT. PLEASE READ THE TERMS CAREFULLY BEFORE YOU OPEN THE SEALED ENVELOPE, BECAUSE BY OPENING THE DISK PACKAGE YOU ARE AGREEING TO BE BOUND BY THE TERMS OF THIS AGREEMENT. IF YOU DO NOT AGREE TO THESE TERMS, LICENSOR WILL NOT LICENSE THIS SOFTWARE TO YOU, AND IN THAT CASE YOU SHOULD RETURN THIS PRODUCT PROMPTLY, INCLUDING THE PACKAGING, THE UNOPENED DISK PACKAGE, AND ALL WRITTEN MATERIALS, TO THE PLACE OF PURCHASE PROMPTLY FOR A FULL REFUND.

Ownership of the Software

1. The enclosed Licensor software program ("Software") and the accompanying written materials are owned by Licensor and are protected by United States copyright laws, by laws of other nations, and by international treaties.

Grant Of License

2. Licensor grants to you the right to use one copy of the Software on a single computer. You may load one copy into permanent memory of one computer and may use that copy, or the enclosed diskettes, only on that same computer. You may install the Software on a single network server, provided that you have a License for Network Station from Licensor for each station of the network at which the Software is used.

Restrictions on Use and Transfer

3. You may not copy the Software, except that (1) you may make one copy of the Software solely for backup or archival purposes, and (2) you may transfer the Software to a single hard disk provided you keep the original solely for backup or archival purposes. You may not copy the written materials.

4. You may permanently transfer the Software and accompanying written materials (including the most recent update and all prior versions) if you retain no copies and the transferee agrees to be bound by the terms of this Agreement. Such a transfer terminates your license. You may not rent or lease the Software or otherwise transfer or assign the right to use the Software, except as stated in this paragraph.

5. You may not reverse engineer, decompile, or disassemble the Software.

Limited Warranty

6. Licensor warrants that the Software will perform substantially in accordance with the accompanying written materials for a period of 90 days from the date of your receipt of the Software. Any implied warranties on the Software are limited to 90 days. Some states do not allow limitations on duration of an implied warranty, so the above limitation may not apply to you.

7. Licensor disclaims all other warranties, either express or implied, including but not limited to implied warranties of merchantability, fitness for a particular purpose, and non-infringement, with respect to the software and the accompanying written materials. This limited warranty gives you specific legal rights. You may have others, which vary from state to state.

8. Licensor's entire liability and your exclusive remedy shall be, at licensor's choice, either (a) return of the price paid or (b) replacement of the software that does not meet licensor's limited warranty and which is returned to licensor with a copy of your receipt. Any replacement Software will be warranted for the remainder of the original warranty period or 30 days, whichever is longer. These remedies are not available outside the United States of America.

9. This Limited Warranty is void if failure of the Software has resulted from modification, accident, abuse, or misapplication.

10. In no event will licensor be liable to you for damages, including any loss of profits, lost savings, or other incidental or consequential damages arising out of your use or inability to use the software. Because some states do not allow the exclusion or limitation of liability for consequential or incidental damages, the above limitation may not apply to you.

11. This Agreement is governed by the laws of the State of Vermont.

12. If you have any questions concerning this Agreement or wish to contact Licensor for any reason, please write: Ai Squared, P.O. Box 669, Manchester Center, VT 05255.

13. U.S. Government Restricted Rights. The Software and documentation are provided with Restricted Rights. Use, duplication, or disclosure by the Government is subject to restrictions set forth in subparagraph (c)(1) of The Rights in Technical Data and Computer Software clause at DFARS 252.227-7013 or subparagraphs (c)(1)(ii) and (2) of Commercial Computer Software - Restricted Rights at 48 CFR 52.227-19, as applicable. Supplier is Ai Squared, P.O. Box 669, Manchester Center, VT 05255

Contents

Introduction	1
What is BigShot?	1
System Requirements.....	2
Terminology.....	2
Getting Started	3
Installing BigShot	3
Uninstalling BigShot.....	3
Starting BigShot.....	4
BigShot Toolbar.....	5
BigShot Tray Icon.....	6
Using BigShot	7
Enabling and Disabling Zoom	7
Changing the Magnification Level	8
Scrolling the Zoom Window.....	8
Automatic Tracking	9
Full Screen and Active Window Zooming	9
Settings Dialog	11
Display	11
Shortcuts	12
Options.....	14
About.....	15
Troubleshooting	16
BigShot Error Messages	16
Technical Support	17

Introduction

What is BigShot?

BigShot Magnifier is the first product of its kind - software that magnifies the screen while you work. You can surf the net, read email and crunch numbers, without straining to see the screen. BigShot supports all Windows programs and works great on desktops and laptops.

Using variable magnification technology, BigShot provides 20 levels of magnification up to 200%. Unique zooming modes allow you to magnify the entire screen or just the active window. BigShot automatically follows program activity, insuring that important information is always in view.

► **BigShot features include:**

- 20 levels of magnification from 105% to 200%
- Full Screen and Active Window zooming
- Intelligent tracking of all program activity keeps important information in view
- Always-on-top toolbar and tray icon and for quick access to BigShot settings
- Quick zooming (in and out) using the mouse wheel
- Support for True Color and High Color display modes and all screen resolutions

System Requirements

In order to run BigShot, you must have a PC compatible system that includes the following:

- Pentium or compatible processor with MMX technology
- One of the following operating systems:
 - Windows XP
 - Windows *Me* (Millennium Edition)
 - Windows 2000
 - Windows NT 4.0
 - Windows 95/98
- High Color (16 bit) or True Color (24 and 32 bit) display driver
- Minimum of 32MB of system RAM

Terminology

Below is a list of important terms used in the BigShot documentation.

Normal Screen The display screen as it normally appears, without magnification.

Scrolling Changing the contents of a zoom window, allowing a different portion of the “normal screen” to be magnified in a zoom window.

Zoom Window A rectangular portion of the screen that contains a magnified view of the “normal screen”. BigShot features two types of zoom windows: **Full Screen** and **Active Window**.

Getting Started

Installing BigShot

When you insert the BigShot CD in your CD-ROM drive, the Setup program will start automatically. Follow the on-screen instructions to complete the installation.

- ▶ **If Setup does not start automatically...**
 1. Click on the Windows Start button and select **R**un...
 2. Browse to your CD-ROM drive.
 3. Select the Setup program and click on **O**pen.
 4. Click **OK** in the Run dialog box.

Installing BigShot in Windows 2000 and NT 4.0

When you run Setup in Windows 2000 or NT 4.0, BigShot will install system-level components. In order to install these components you must have administrator privileges. If you do not have these privileges, contact your system administrator before proceeding with the installation.

During the installation, you will be asked if you want to make an emergency repair disk. We recommend that you do so. The repair disk will allow you to restore your system, in the event of an installation problem.

Uninstalling BigShot

You can remove BigShot from your system at any time. Uninstalling the software erases all program files and returns your system to the state it was in prior to installing BigShot. Before uninstalling, make sure that BigShot is not currently running.

- ▶ **To uninstall BigShot**
 1. Click on the Start button.
 2. Select **P**rograms ▶ **B**igShot 2.0 ▶ **U**ninstall BigShot.
 3. Follow the on-screen instructions.

Starting BigShot

Once BigShot is installed on your system, it can be launched using one of the following procedures.

► To start BigShot

Do one of the following:

- Click on the BigShot Magnifier icon on the Windows desktop.
- From the Start menu, select **Programs ► BigShot 2.0 ► BigShot Magnifier**.

Note: BigShot can be configured to run automatically when you start your system. This setting is available in the Options tab of the Settings dialog.

When BigShot starts up, it changes your display, showing a magnified view of the normal screen. When you first start the program the following features are active:

- A Full Screen zoom window
- Magnification level of 150% (one and one-half times the normal screen size)
- The BigShot Toolbar appears as an always-on-top window
- A BigShot icon appears in the system tray

All of your Windows programs will continue to operate as normal while magnification is active. By moving the mouse, you will be able to view any portion of the normal screen.

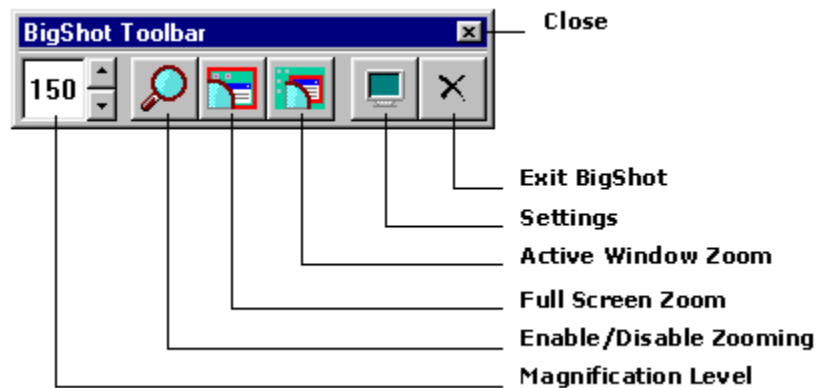
BigShot Toolbar

The BigShot Toolbar is a small window containing buttons that control BigShot's most important features. The toolbar is an always-on-top window, which remains on top of all other windows, even when it is not active. This allows you quickly change BigShot settings while running other programs.

► To hide and show the BigShot Toolbar

Do one of the following:

- Select **T**oolbar in the BigShot tray icon menu.
- Press the BigShot Toolbar hotkey: **A** + **h** .



BigShot Toolbar

Magnification Level Sets the magnification level from 100% to 200% in steps of 5%.

Enable/Disable Zooming Enables or disables screen magnification.

Full Screen Zoom Enables full screen zooming. When this button is depressed, the entire screen is magnified.

Active Window Zoom Enables active window zooming. When this button is depressed, only the active application window is magnified (instead of the entire screen).

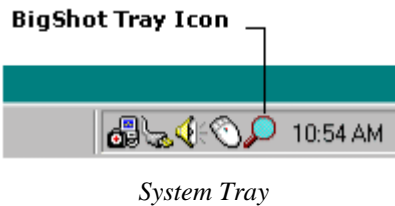
Settings Displays the BigShot Settings dialog box.

Exit BigShot Exits BigShot and restores the screen to its normal size.

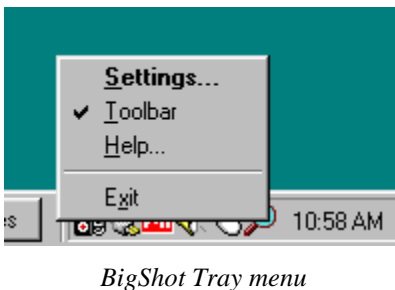
Close Hides the BigShot Toolbar. The toolbar can be shown by selecting **T**oolbar in the tray icon menu.

BigShot Tray Icon

When BigShot is running, a program icon appears in the system tray (the area on the right side of the task bar). The tray icon provides quick access to the BigShot settings.



- ▶ **To open the Settings dialog**
 - Double-click on the BigShot tray icon.
- ▶ **To open the tray icon menu**
 - Right-click on the BigShot tray icon.



Settings... Displays the BigShot Settings dialog box.

Toolbar Shows or hides the BigShot toolbar.

Help Activates the BigShot Help system.

Exit Exits BigShot and restores the screen to its normal size.

Using BigShot

Enabling and Disabling Zoom

You can enable or disable BigShot at any time, without exiting the program. When disabled, BigShot returns the screen to its normal (unmagnified) state.

► To enable BigShot

Do one of the following:

- Click on the **Enable/Disable Zooming** button.
- Press the Enable Zoom hotkey: **A + I** .
- In the Display tab of the Settings dialog, check the **Enable Zooming** checkbox, then click **OK** or **Apply**.

► To disable BigShot

Do one of the following:

- Click on the **Enable/Disable Zooming** button.
- Press the Disable Zoom hotkey: **A + D** .
- In the Display tab of the Settings dialog, check the **Enable Zooming** checkbox, then click **OK** or **Apply**.

Changing the Magnification Level

BigShot provides a variety of magnification levels, allowing you to enlarge the contents of the screen according to your needs. Magnification levels range from 105% to 200%, in steps of 5%.

► To set the magnification level

Do one of the following:

- On the BigShot Toolbar, select the desired level from the magnification spin box.
- In the Display tab of the Settings dialog, adjust the **Magnification Level** slider.
- Use the Magnification hotkeys:

To...	Press...
Increase magnification	A +Z
Decrease magnification	A +X

Scrolling the Zoom Window

Scrolling moves the contents of the zoom window, allowing you to view any portion of the screen. You can smoothly scroll in any of 4 directions by using the Scroll hotkeys.

To...	Press...
Scroll left	A +l
Scroll right	A +r
Scroll up	A +t
Scroll down	A +b

By holding down the hotkey, you can perform continuous scrolling in the selected direction.

Automatic Tracking

Tracking allows the zoom window to automatically follow screen activity, keeping important information in view. BigShot is preprogrammed to track all important events, including mouse movement, keyboard input, menu selections, control focus and window activation.

When tracking a moving object, such as the mouse, the zoom window automatically scrolls when the object approaches the edge of the magnified view.

Full Screen and Active Window Zooming

BigShot displays its magnified view of the normal screen in a zoom window. You can think of a zoom window as a magnifying glass held in front of your display monitor. The zoom window can be configured in two modes: Full Screen and Active Window.

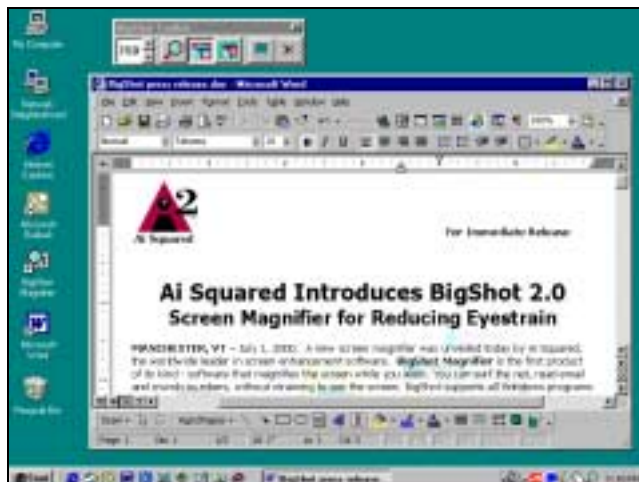
Full Screen The zoom window occupies the entire screen. All areas of the normal screen can be viewed by scrolling its contents.

Active Window The zoom window is automatically sized and positioned to fit over the active application window (the window with the highlighted title bar). Magnified viewing is limited to the contents of the application window, when scrolling or tracking. When a new application window becomes active or the current application window is resized, the Active Window automatically adjusts to fit the application window.

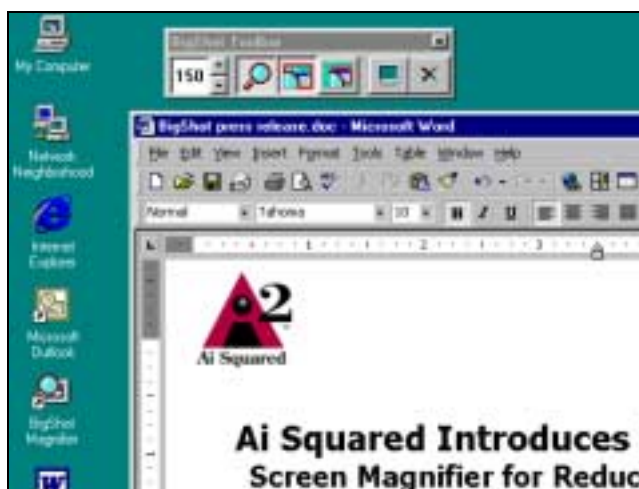
► To switch between Full Screen and Active Window zooming:

Do one of the following:

- On the BigShot Toolbar, click on the **Full Screen Zoom** or **Active Window Zoom** button.
- In the Display tab of the BigShot Settings dialog, select the **Full Screen** or **Active Window** radio button.
- Press the Switch Zoom Mode hotkey: **A + e** .



Normal screen (unmagnified)



Full screen zoom



Active window zoom

Settings Dialog

The Settings dialog box gives you access to all of the features in BigShot. These settings are grouped according to function in four dialog tabs. Changes to settings take effect when clicking the **OK** or **Apply** button.

► **To display the Settings dialog**

Do one of the following:

- Click on the **Settings** button in the BigShot toolbar.
- Select **S**ettings... in the BigShot tray icon menu.

Display

The **Display** tab allows you to change zooming and magnification settings.



Display Tab

Enable Zooming Enables screen magnification.

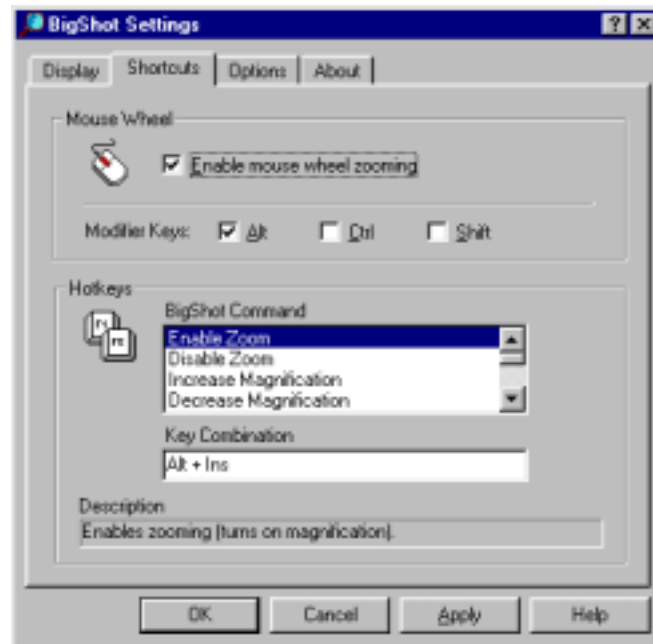
Full Screen Enables Full Screen zooming. When selected, the entire screen is magnified.

Active Window Enables Active Window zooming. When selected, only the active application window is magnified (instead of the entire screen).

Magnification Level Sets the magnification level from 100% to 200% in steps of 5%.

Shortcuts

The **Shortcuts** tab allows you to select key combinations used with mouse wheel and hotkey commands. These shortcuts allow you to control BigShot while running other programs.



Shortcuts Tab

Enable mouse wheel zooming Enables use of the mouse wheel to change the magnification level.

Modifier Keys Selects the key combination to be used for mouse wheel zooming. These keys must be held down while rotating the mouse wheel in order to change the magnification level.

Note: When mouse wheel zooming is enabled, the mouse wheel will not function in other programs when the modifier keys are held down.

BigShot Command A list of BigShot hotkey commands. When a command is highlighted, its key combination appears in the Key Description box.

Key Combination The current key combination for the highlighted BigShot command. To define a new key combination, click in the box and hold down the desired keys. The key combination must consist of one or more modifier keys (Alt, Ctrl and Shift) and a single primary key (any other key).

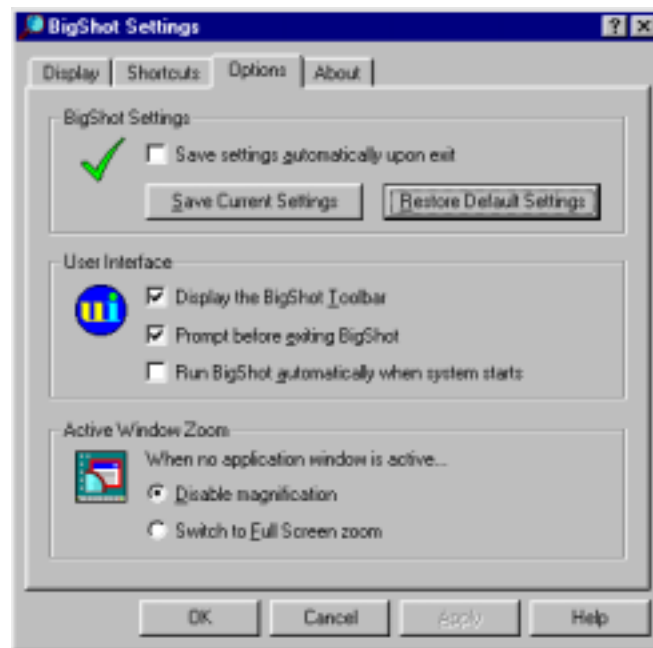
Description Displays a description of the highlighted hotkey command.

► **Default Hotkey settings:**

To...	Press...
Enable zoom	A +l
Disable zoom	A +D
Increase magnification	A +z
Decrease magnification	A +x
Scroll left	A +l
Scroll right	A +r
Scroll up	A +t
Scroll down	A +b
BigShot toolbar	A +h
Switch zoom mode	A +e
Capture screen	None

Options

The **Options** tab contains miscellaneous BigShot settings.



Options Tab

Save settings automatically upon exit All BigShot settings are saved when the program exits. These settings are automatically restored the next time you run BigShot.

Save Current Settings Saves the current BigShot settings. These settings are automatically restored the next time you run BigShot. This option is gray out when **Save settings automatically upon exit** is checked.

Restore Default Settings Restores all BigShot settings to the default values.

Display the BigShot Toolbar When checked, the BigShot toolbar is displayed. When disabled, the toolbar is hidden.

Prompt before exiting BigShot You will be prompted to confirm your choice to exit the program.

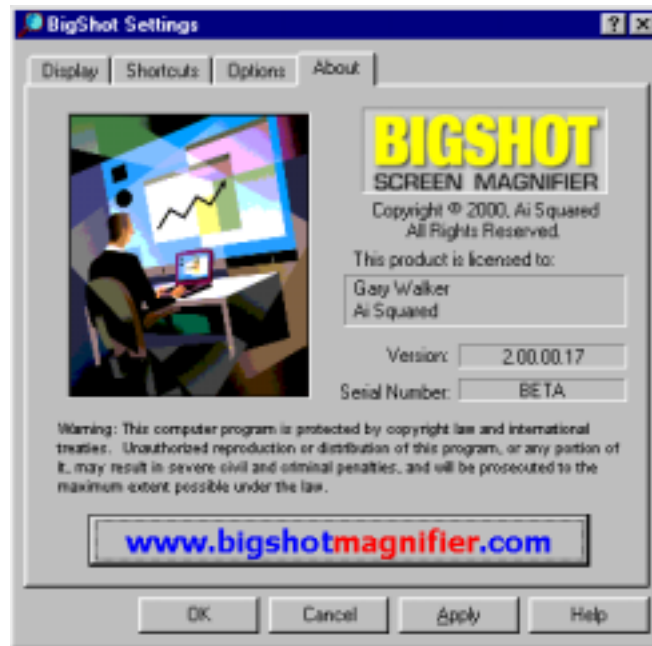
Run BigShot automatically when system starts BigShot will automatically run each time you start your system.

Disable magnification When Active Window zooming is enabled and there are no active application windows, magnification becomes disabled.

Switch to Full Screen zoom When Active Window zooming is enabled and there are no active application windows, full screen magnification is enabled.

About

The **About** tab displays user and program information.



About Tab

www.bigshotmagnifier.com Launches your Internet browser and navigates to the BigShot website.

Troubleshooting

BigShot Error Messages

- This version of BigShot requires Windows 95, Windows 98 or Windows Millennium.

The version of BigShot you are running works only with Windows 95, Windows 98 or Win Me (Millennium Edition). Support for Windows 2000 and NT 4.0 will be available in a future version of BigShot.

- BigShot cannot be run while ZoomText is running. Exit ZoomText and launch BigShot again.

BigShot will not work when the ZoomText screen magnifier is running. In order to use BigShot you will need to first exit ZoomText.

- BigShot requires High Color (16 bit) or True Color (24 or 32 bit) display mode. Run the Display applet in the Control Panel and switch to one of these display modes.

The display mode you are currently running is not supported by BigShot. Use the Display applet (located in the Control Panel) to switch to either High Color or True Color mode.

- A BigShot hotkey conflicts with another system hotkey. Go to the Shortcuts tab in the BigShot Settings dialog to assign a new hotkey combination. Conflicting hotkeys will have their Key Combination set to None.

One or more of BigShot's key combinations are already in use by Windows or another program. To reactivate use of these BigShot commands, you will need to reassign their key combinations.

- BigShot requires a processor with the MMX instruction set.

The microprocessor in your system does not support the MMX instruction set. BigShot requires MMX in order to perform its magnification.

- BigShot is unable to launch DDI16.EXE. Run the BigShot Setup program again.

A BigShot component has been deleted or moved on your hard drive. Run the BigShot Setup program to fix this problem.

- Microsoft Active Accessibility is not properly configured on your system. BigShot requires MSAA in order to run. Try rebooting and running BigShot again. If this message reappears, run the BigShot Setup program, followed by a reboot.

Microsoft Active Accessibility must be installed on your system. You may have aborted the MSAA installation while running the BigShot Setup program. Run the BigShot Setup program again and allow the MSAA installation to be completed.

- Surface initialization error

An error occurred while BigShot was initializing its display surfaces. Contact Ai Squared technical support for assistance.

Technical Support

Ai Squared wants to be sure that you get the most out of your product. If you need assistance using BigShot or resolving a technical problem, we recommend you visit the knowledge base on our website: www.bigshotmagnifier.com. The knowledge center contains a library of technical information, FAQs and the latest software updates.

If you are encountering a technical problem and could not find the solution on our website, you may contact Ai Squared technical support via phone, fax or email.

phone: (802) 362-3612

fax: (802) 362-1670

email: support@aisquared.com



P.O. Box 669
Manchester Center, VT 05255-0669

BigShot Tray Icon



- Exit BigShot
- Settings
- Active Window Zooming
- Full Screen Zooming
- Enable Zooming
- Magnification Level